

Duroblade®-Silkoat™ significantly boosts coated surface results for board and fine paper applications

Leading mills around the world are choosing Duroblade-Silkoat whenever they need the very best coated paper surface quality.

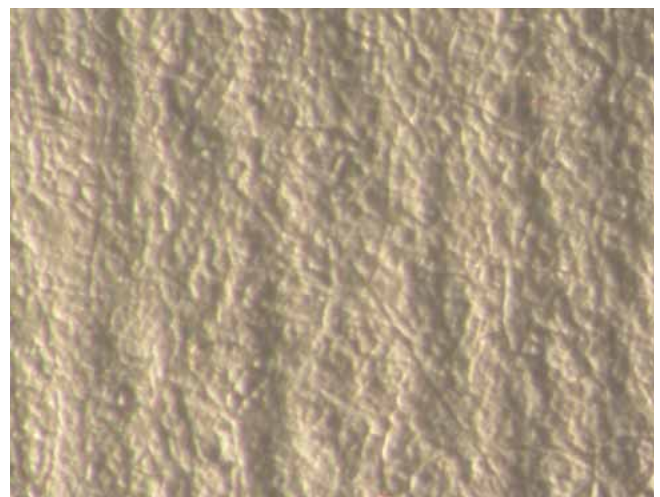
Since mid-2005, major board and fine paper mills in Asia and Europe have been proving that Duroblade-Silkoat blades are the industry's top choice for board topcoat and fine paper applications requiring enhanced coated paper surface quality.

Developed by BTG engineers to further boost coated surface properties for high-quality grades, test results show that Duroblade-Silkoat significantly increases paper smoothness and gloss, reducing the risk of microlines, scratches and streaks caused by rheological interference between the blade and coating colour.

Images comparing paper surfaces - from a leading Asian mill - coated using Duroblade-Silkoat and those coated with a standard high-performance blade show a total elimination of microlines and an increase in paper gloss from 57% to 63%.

Duroblade®-Silkoat™ users benefit from

- an increase in gloss from 2 to 6 points
- up to 25% less surface roughness
- elimination of microlines



Paper coated with Duroblade-Silkoat (left) shows a finer, more even surface finish than the same paper coated using a conventional ceramic-tipped blade (both images magnified x25).

Trials conducted in fine paper mills in Italy using Duroblade-Silkoat blades and tungsten carbide blades confirm the superior surface properties obtained using the new model Duroblade.

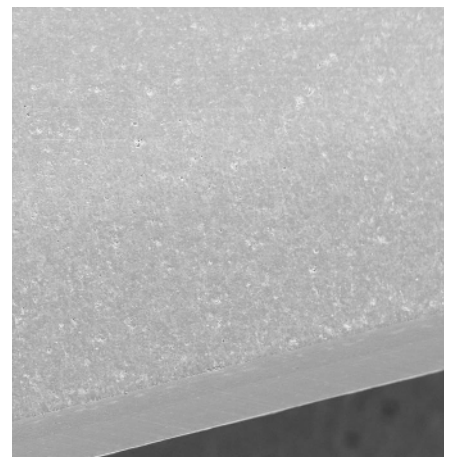


A comparison of the finish achieved using Duroblade-Silkoat (left) and a tungsten blade (right) clearly shows the superior surface quality delivered by Duroblade (both images magnified x25).

Mills in Germany and Finland have likewise confirmed that Duroblade-Silkoat blades deliver significant performance improvements for applications normally run using steel blades, with profiles, coatweight and quality benchmarks reached immediately after blade change, and microlines completely eliminated.

Close examination of the surface properties of Duroblade-Silkoat compared with both ceramic and tungsten blades also reveal a much smoother surface with homogeneous wear.

Additional Duroblade-Silkoat benefits include shinier appearance and better evenness of the mirror at the coater head from start-up to blade change.



The image on the left (x 150) shows wear on a standard ceramic coating blade, while the image in the centre (x 200) shows a worn tungsten blade. By comparison, the wear on the Duroblade-Silkoat blade (right, x 150) is much more homogeneous – enabling the blade to deliver better long-life performance for applications requiring particularly high surface quality.

To learn more about how Duroblade-Silkoat can raise your company's productivity and significantly improve your finished paper quality, visit www.btg.com